

Frédéric LEFEVER

Carnet de prise de vues

Portugal, septembre 2011

Mardi 6 septembre 2011

Départ Mankouil si Mer

ARRIVÉE BAYONNE

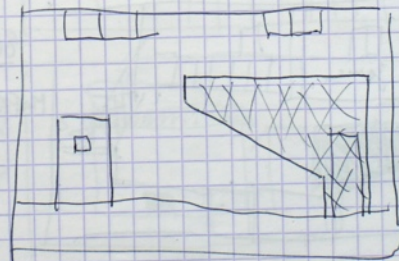
TOTAL = 893 KM.

Mercredi 7 septembre 2011

Arrivée Bragança Solin.

TOTAL = 604 KM

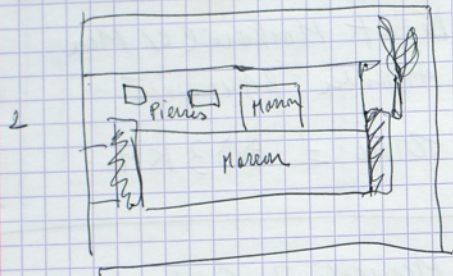
Jeudi 8 septembre 2011



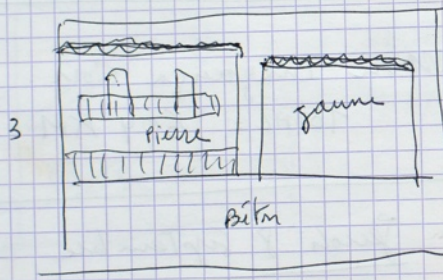
86103M

RABAL (P)

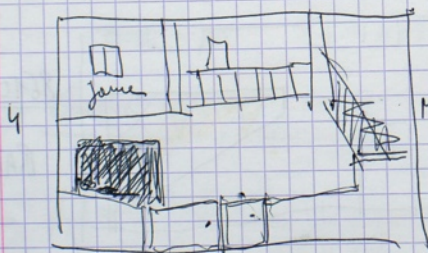
1



8620911
CARRAGOSA
(P)



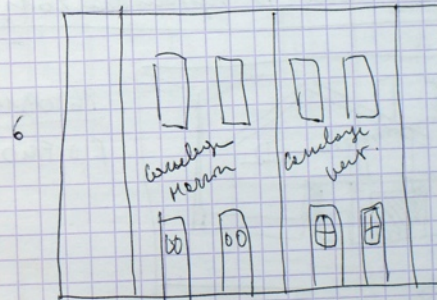
8630911
VILARINHO
(P)



8640911
MOPREITA (P)



8650911
PAÇÓ
(P)

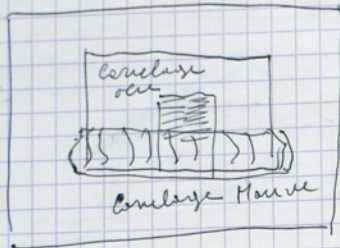


8660911
BRAGAÇA
(P)



8670911
BRAGAÇA
(P)

8



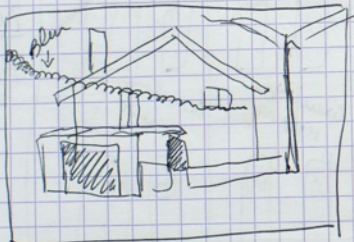
8680911

BABE (P)

TOTAL = 141 KM

Wednesday 3 September 2011 BL

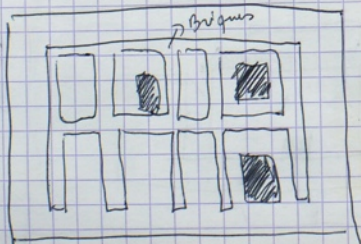
1



8690911

Rio Frio (P)

2



8700911

Rio Frio (P)

3



8710911

Rio Frio (P)

4



8720911

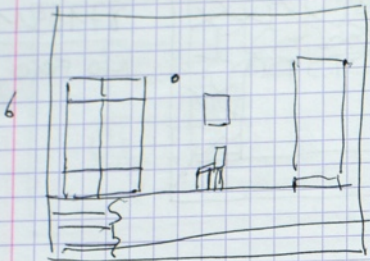
PAÇÓ (P)

5

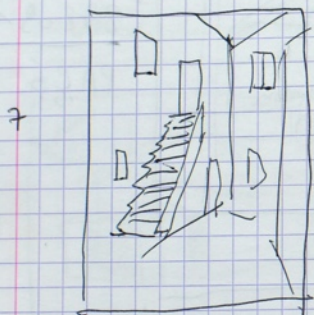


8730911

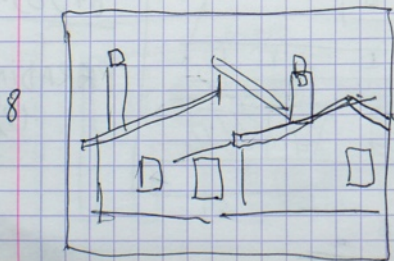
PARADINHA (P)



8740911
PARADINHA (P)



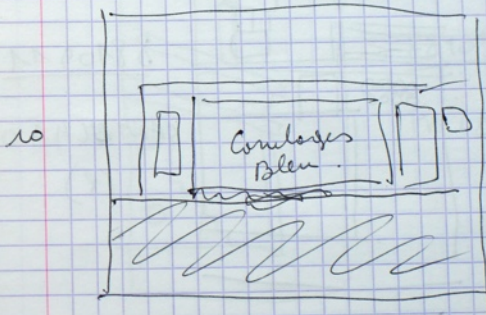
8750911
PARADINHA (P)



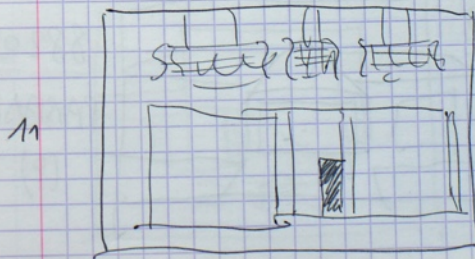
8760911
PARADINHA (P)



8770911
ARGOZELO
(P)

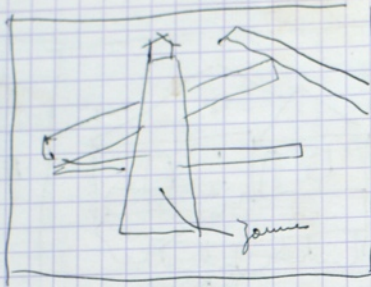


8780911
ARGOZELO
(P)



8790911
CARÇÃO
(P)

12



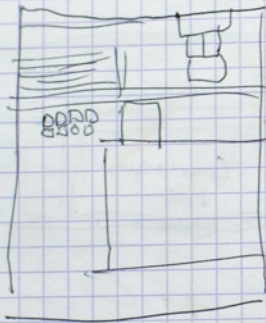
8800911

SANTULHÃO

(P)

Vertical
↙

13

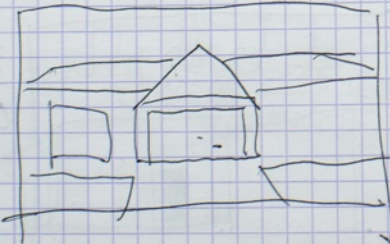


8810911

SANTULHÃO

(P)

14

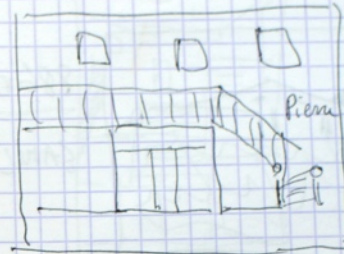


8820911

PARADA

(P)

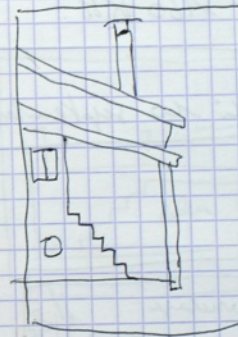
15



8830911

PARADA (P)

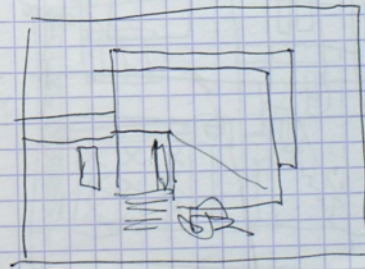
15



8840911

FAILDE (P)

16



8850911

SAMIL (P)

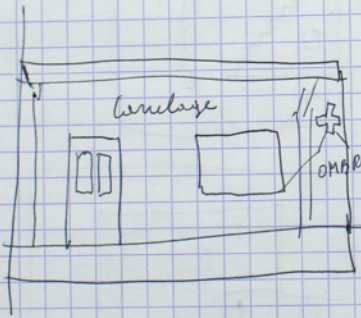


8860911
SARIL (R)

(S)

TOTAL 160 KM.

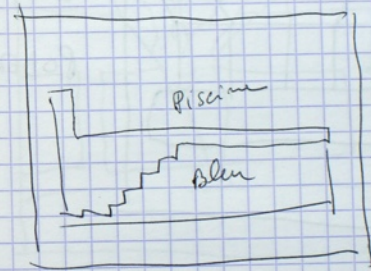
Samedi 10 septembre 2011 B3



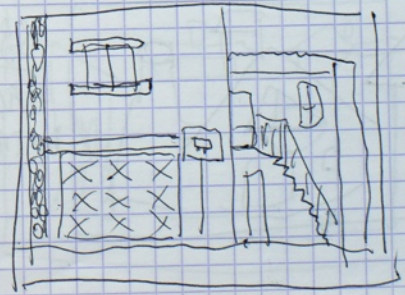
8870911
NOGUEIRA (P)



8880911
NOGUEIRA (P)



8890911
ESPADANEDO (P)

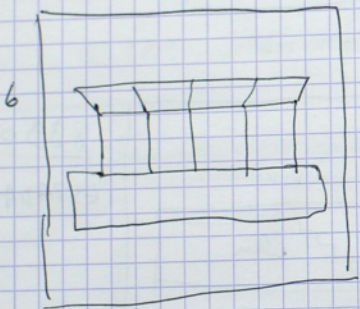


8900911
EDROSO (P)



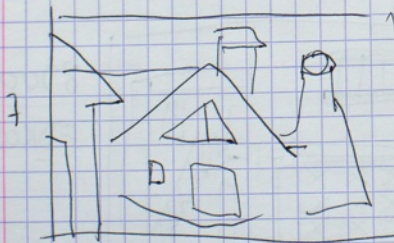
8910911

PODENCE (P)



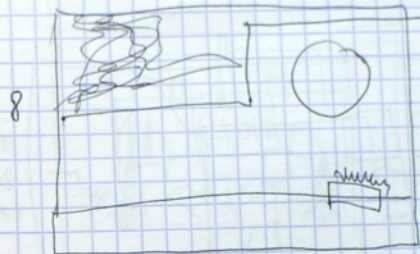
8920911

PODENCE (P)



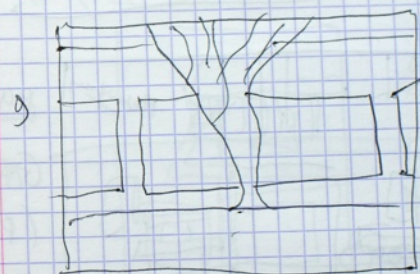
8930911

MACEBO (P)
DO CAVALHEIROS



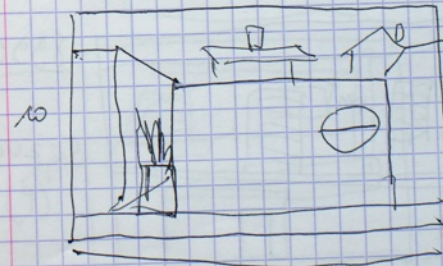
8940911

MACEBO DO
CAVALHEIROS
(P)



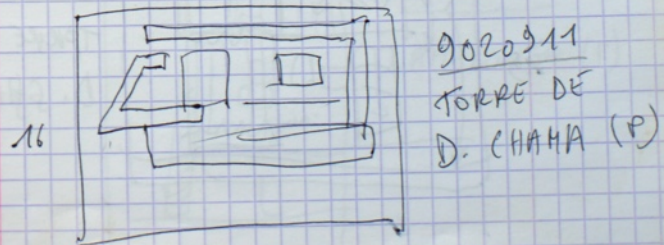
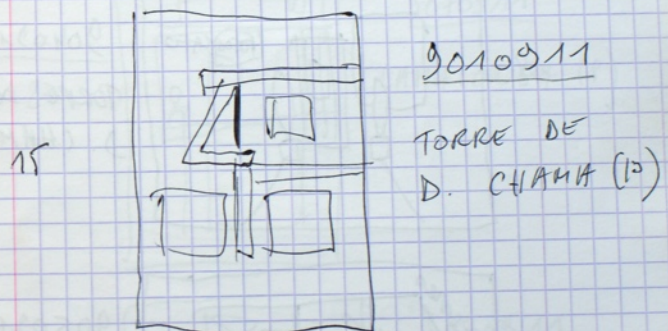
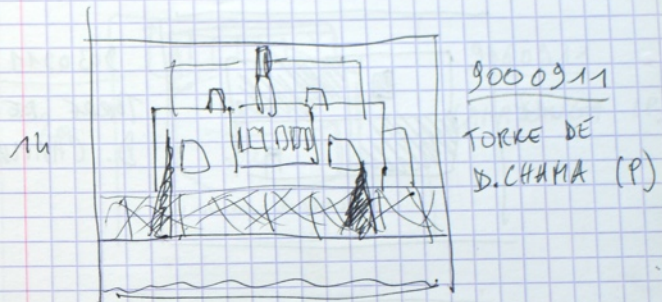
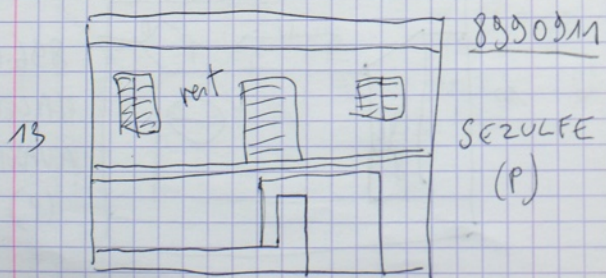
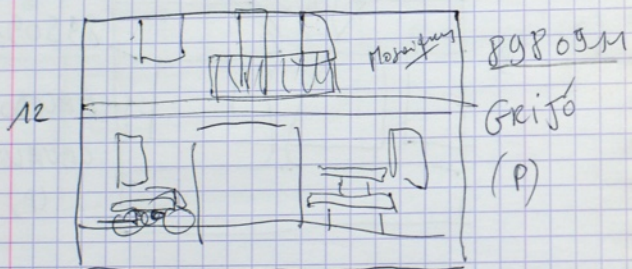
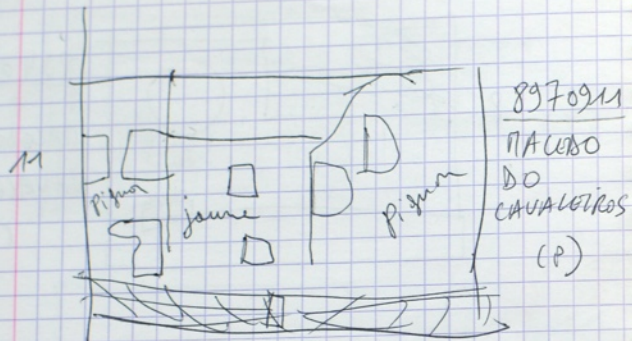
8950911

MACEBO DO
CAVALHEIROS
(P)

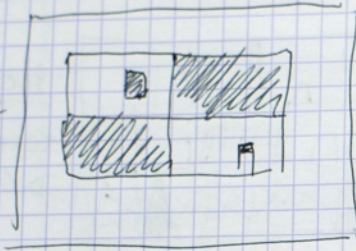


8960911

MACEBO DO
CAVALHEIROS
(P)



17



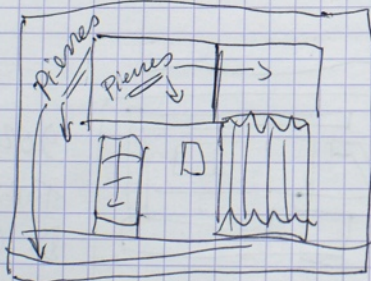
9030911
TORRE DE
D. CHAMA.

18



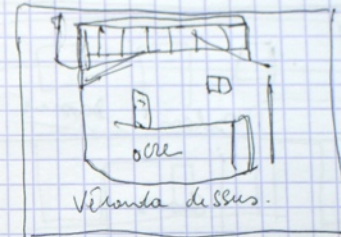
9040911
TORRE DE
D. CHAMA

19



9050911
TORRE DE
D. CHAMA

20



9060911
LAMA LONGA (P)

21



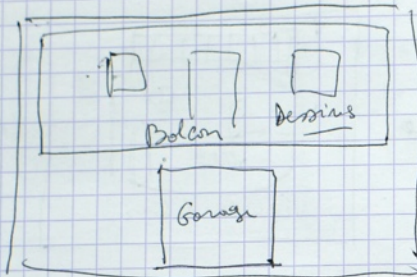
9070911
LAMA LONGA (P)

22



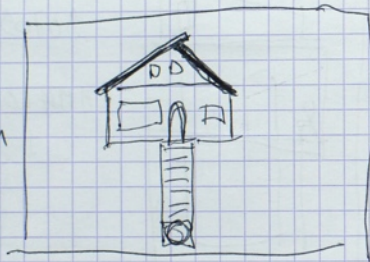
9080911
LAMA LONGA (P)

23



9090911
 LAMA LONGA
 (P)

24

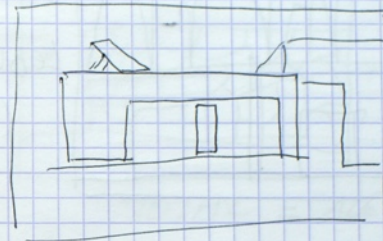


AGROCHAÖ
 0100911
 (P)

TOTAL = 188 KM.

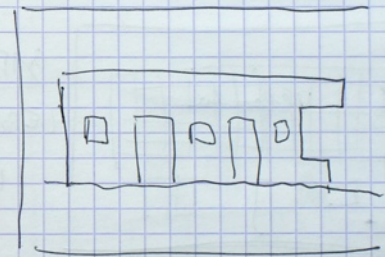
Dimanche 11 septembre 2011 BC

1



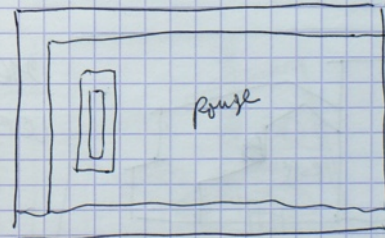
910911
 BRAGAUSA
 (P)

2

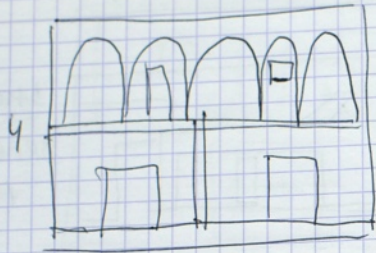


9120911
 BRAGAUSA
 (P)

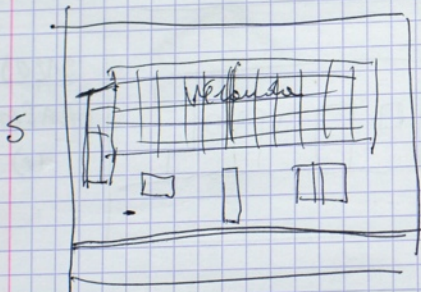
3



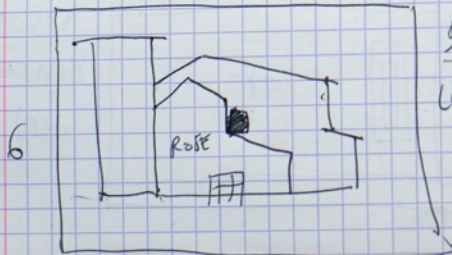
9130911
 BRAGAUSA
 (P)



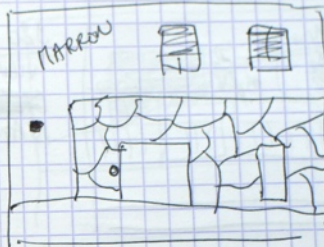
9140911
LEBUÇAO
(P)



9150911
LEBUÇAO
(P)



9160911
LEBUÇAO
(P)



9170911
LEBUÇAO
(P)

TOTAL = 126 KM

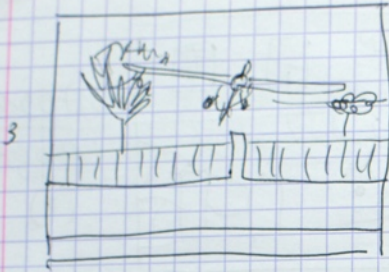
lundi 12 septembre 2011 c



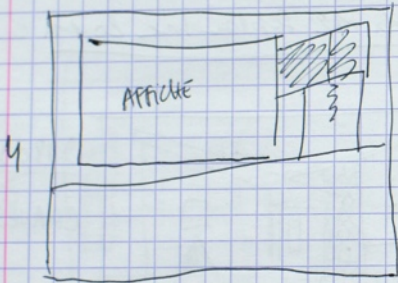
9180911
CHAVES (?)



9190911
VIAJE DO
NANTES (P)



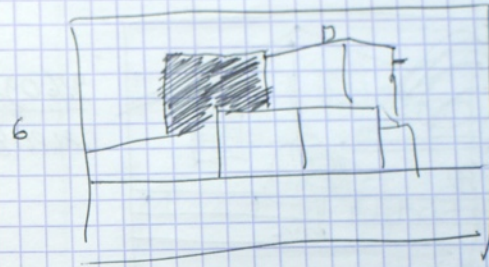
9200911
VILAR DO
~~NAUTES~~ (P)
NAUTES



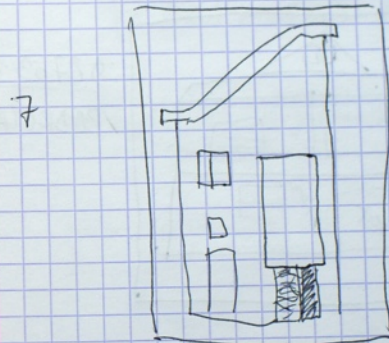
9210911
VILAR DO
NAUTES (P)



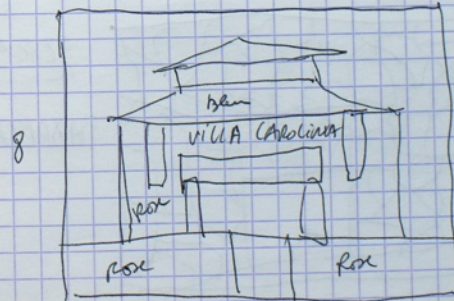
9220911
VILAR DO
NAUTES (P)



9230911
VILAR DO
NAUTES
(P)



9240911
VALPAÇOS (P)



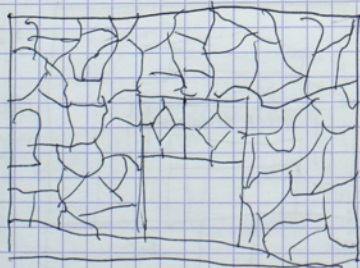
9250911
VALPAÇOS
(P)



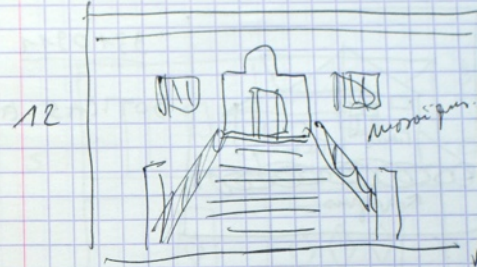
9260911
VALPAGOS (P)



9270911
PADRELA (P)



9280911
PADRELA (P)



9290911
PADRELA (P)

TOTAL = 123 KM.

Mardi 13 Septembre 2011 c



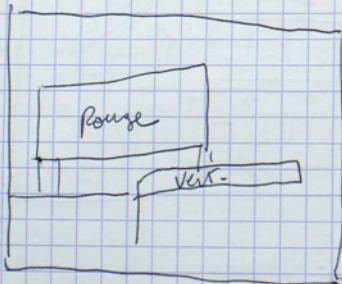
9300911
BOTICAS
(P)



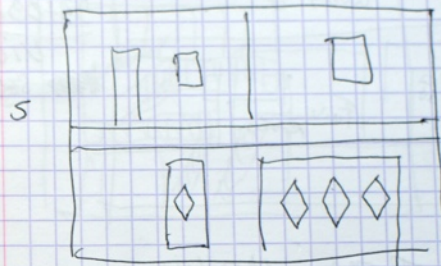
9310911
BOTICAS (A)



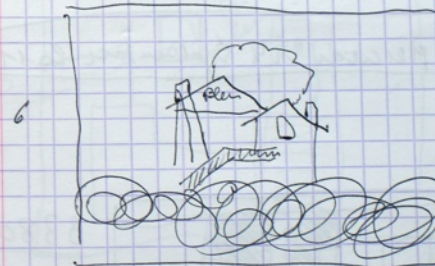
9320911
BOTICAS (P)



9330911
BOTICAS (P)



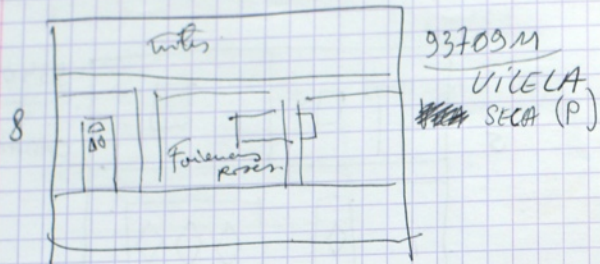
9340911
CASTANHEIRA
(P)



9350911
~~MONTALEGUE~~
(P)
MEDEIROS

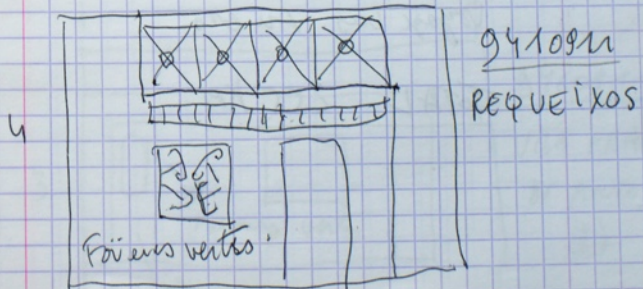
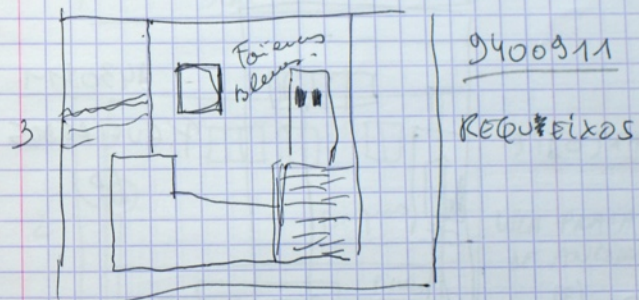
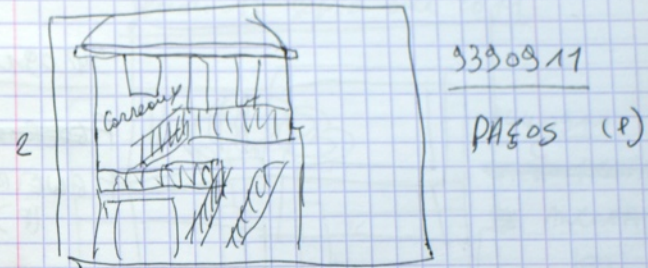


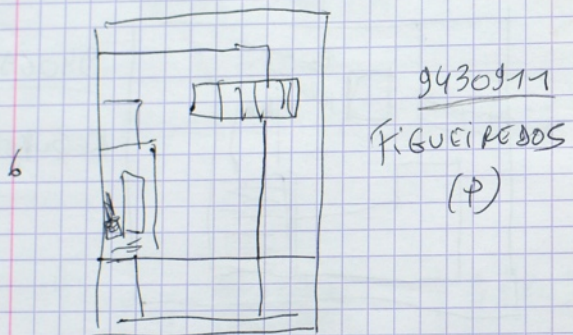
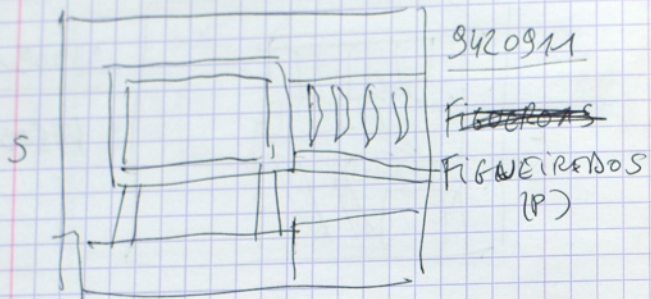
9360911
(P)
MEDEIROS



TOTAL 198 KM

Mercredi 14 September 2011

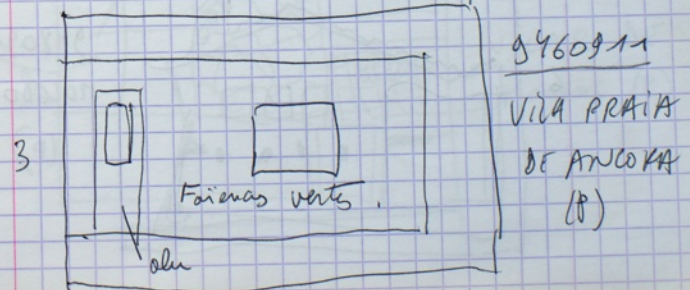
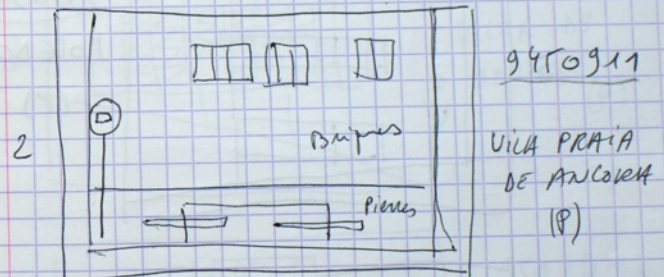




Voyage vers Ancora

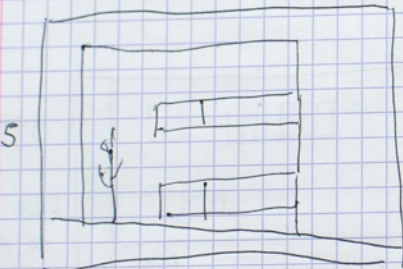
TOTAL 255 KM

Jeudi 11 Septembre 2011





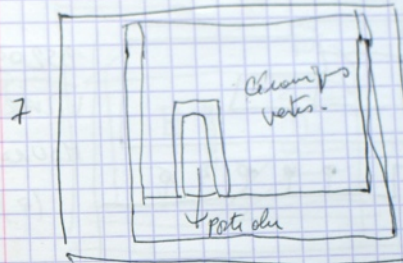
9470911
VILA PRAIA
DE ANCORH.
(P)



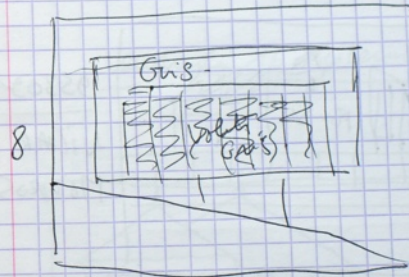
9470911
MOLEDO
(P)



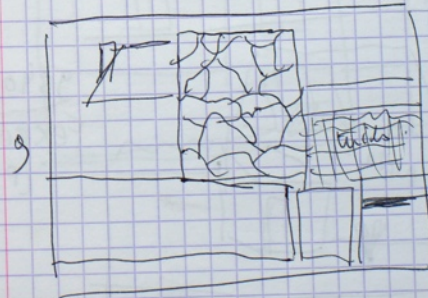
9480911
MOLEDO
(P)



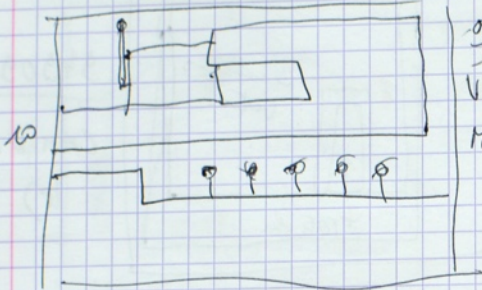
9490911
CAMINHA
(P)



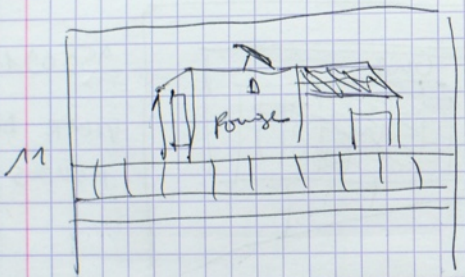
9500911
VICAR DE
MOURAS (P)



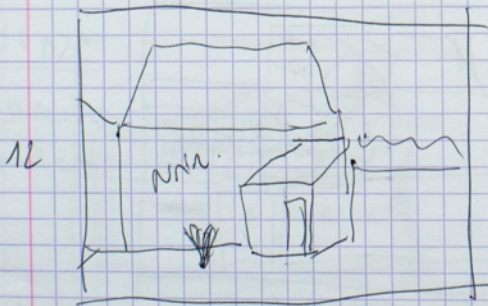
9510911
VICAR DE
MOURAS (P)



9520911
VILAR DE
MOUROS
(P)

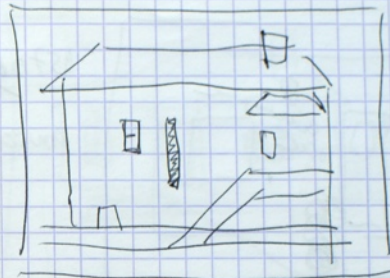


9530911
VILAR DE
MOUROS (P)



9540911
FERREIRA
(P)

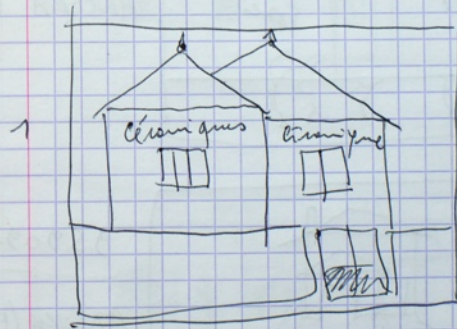
13



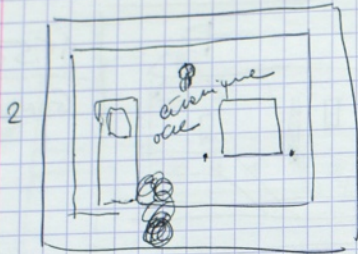
9550911
GONDAREN (P)

TOTAL 114 KM.

Vendredi 16 septembre 2011

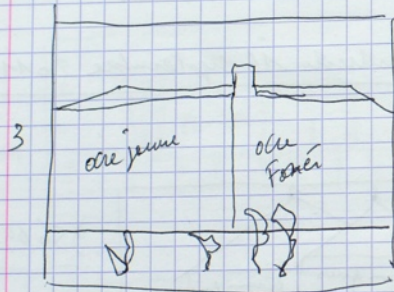


9560911
ANCORA (P)



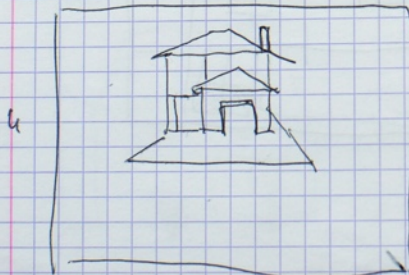
9570911

ANCORA (P)



9580911

ANCORA (P)



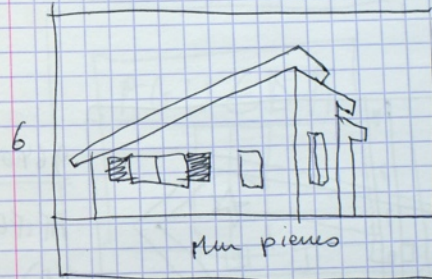
9590911

ANCORA (P)



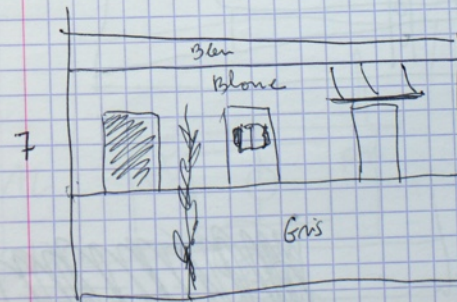
9600911

ANCORA (P)



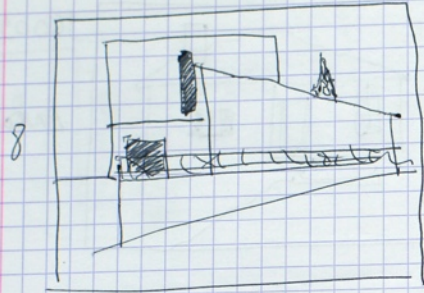
9610911

ANCORA (P)



9620911

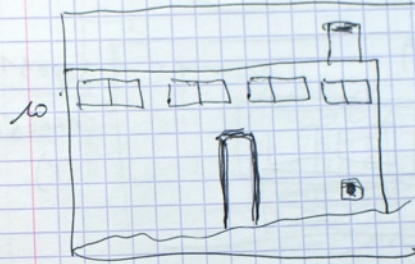
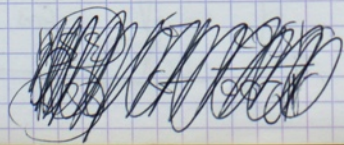
ANCORA (P)



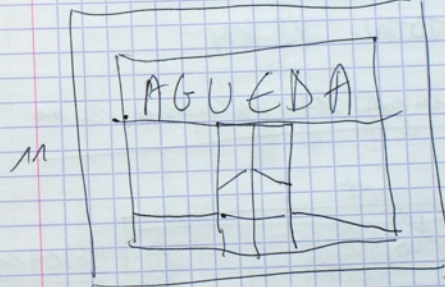
9630311
ANCORA
(P)



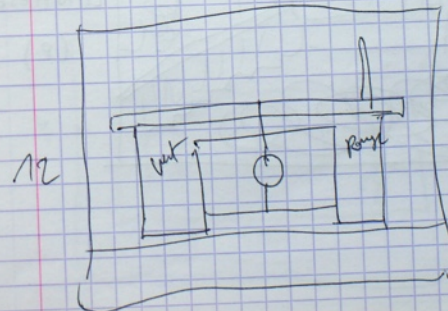
9640311
AFIFE
(P)



9650311
AFIFE (P)

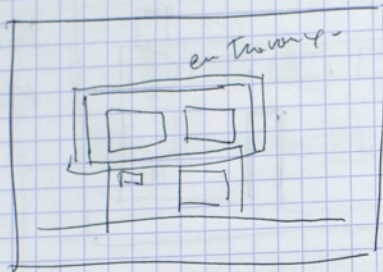


9660311
VIANA DO
CASTELLO
(P)



9670311
VIANA DO
CASTELLO
(P)

13

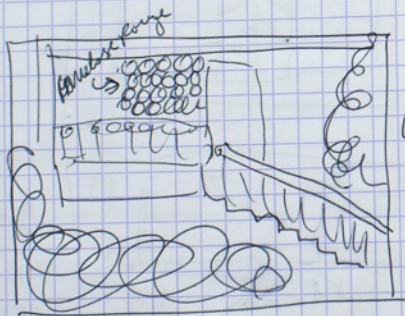


9680911
 CARREGO
 (P)

TOTAL 42 KM

Samedi 17 Septembre 2011

1



9690911
 LANHESES
 (P)

2



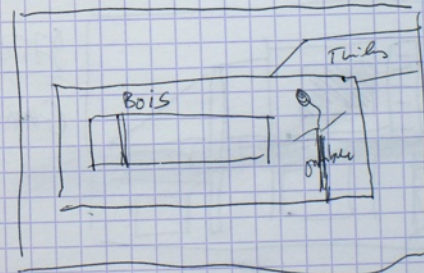
9700911
 LANHESES
 (P)

3



9710911
 CORRELLHA
 (P)

4



9720911
 POUTE LIMA
 (P)

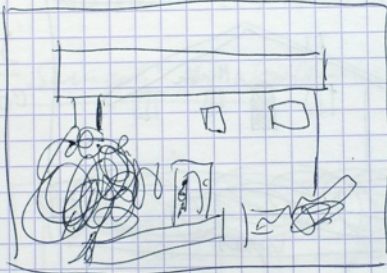
5



9730911

FRIESTAS (P)

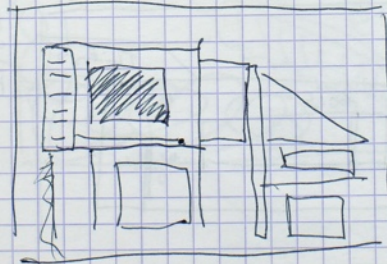
6



9740911

GANFEI (P)

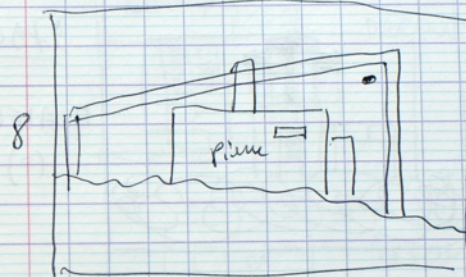
7



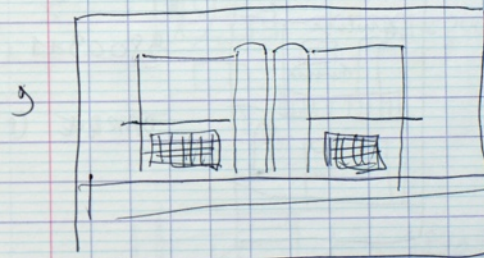
9750911

GANFEI (P)

(Suite) Samedi 17 September 2011



9760911
GANFEI
(P)



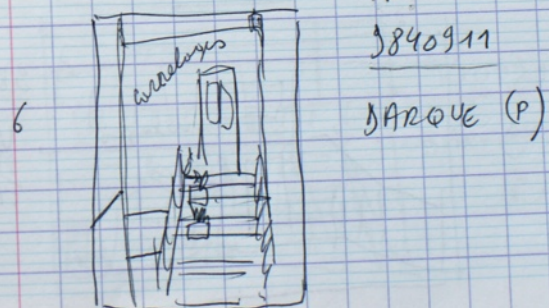
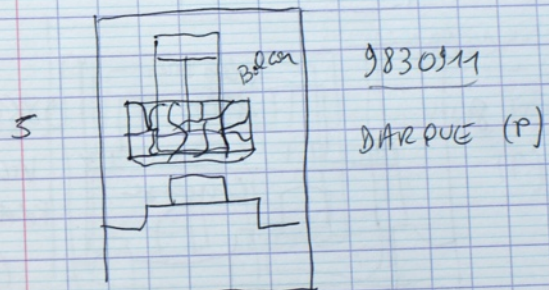
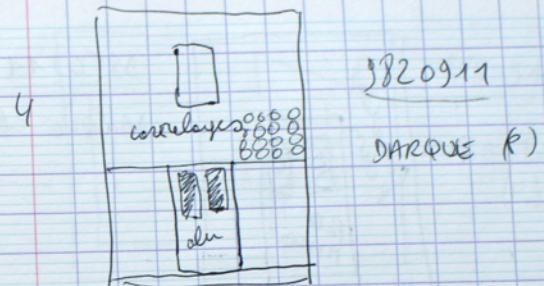
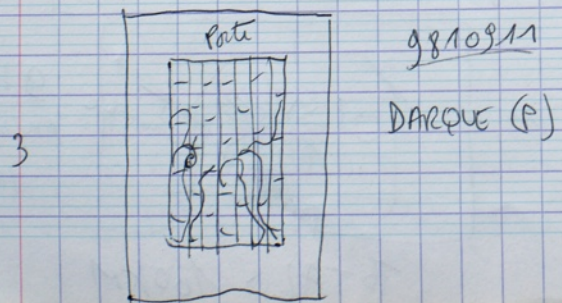
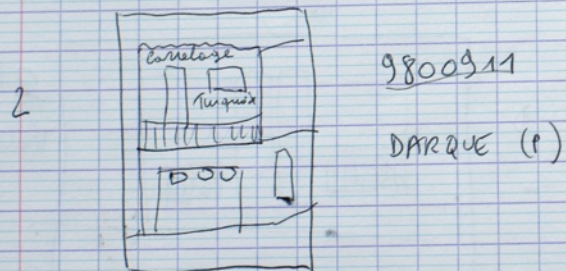
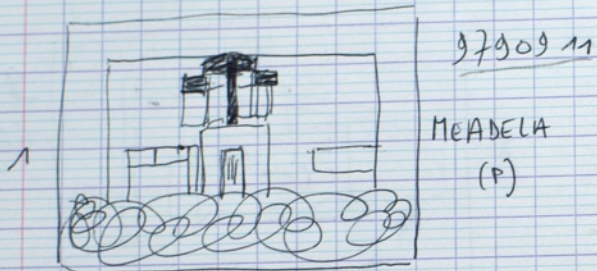
9770911
VERENÇÃ
(P)

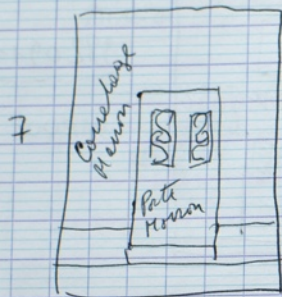


9780911
ANCORA
(P)

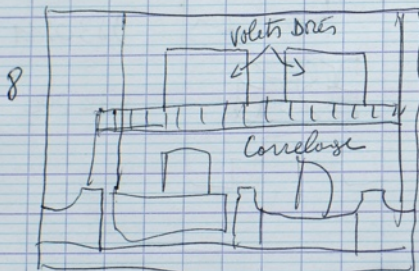
TOTAL = 160KM

Dimanche 18 septembre 2011

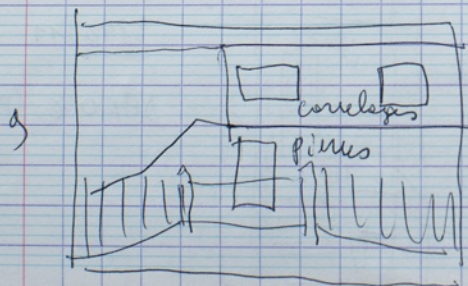




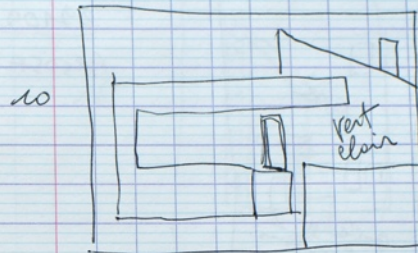
9850911
BARQUE (P)



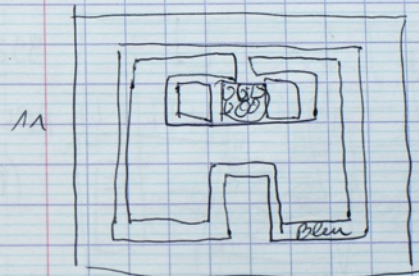
9860911
VILA
FRANÇA
(P)



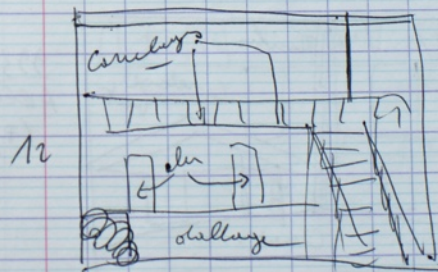
9870911
VILA
FRANÇA
(P)



9880911
VILA FRANÇA
(P)

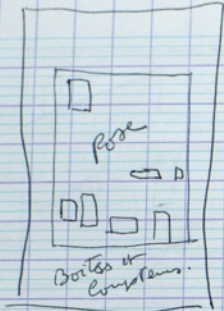


9890911
VILA FRANÇA
(P)



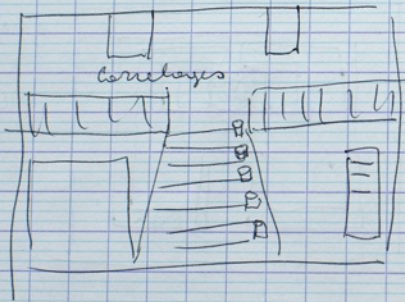
9900911
BARROSELAS
(P)

13



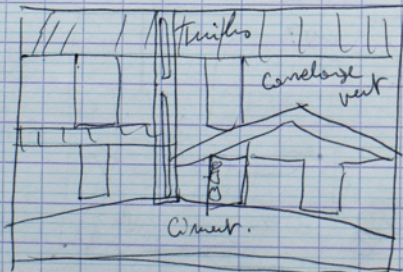
9910911
AREOSA (P)

14



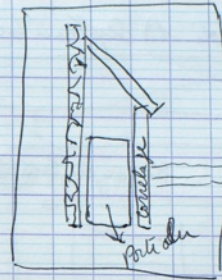
9920911
AREOSA
(P)

15



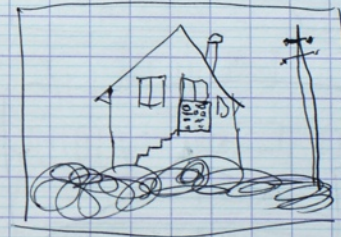
9930911
AREOSA
(P)

16



9940911
AREOSA (P)

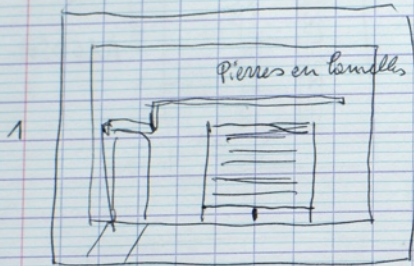
17



9950911
AREOSA (P)

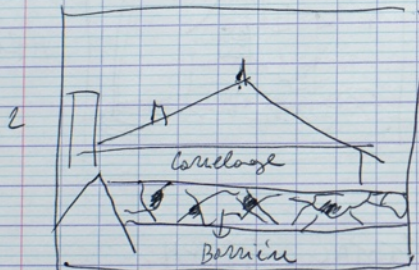
TOTAL = 78 KM.

Lundi 13 septembre 2011



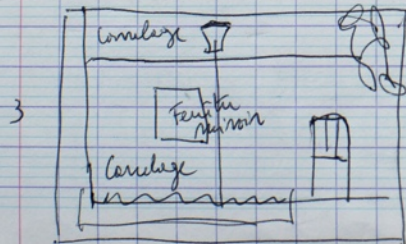
9360911

CASTELO DO
NEIVA
(P)



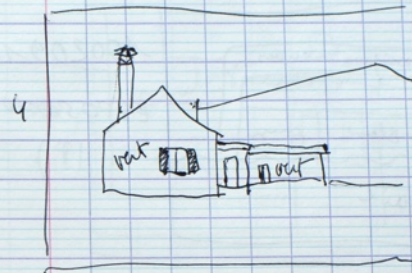
9970911

CASTELO DO
NEIVA (P)



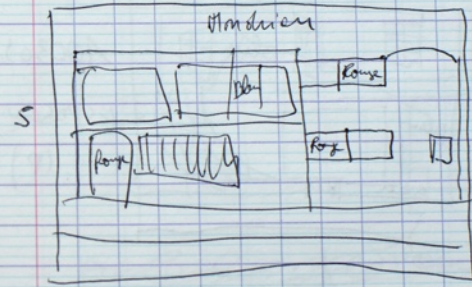
9980911

CASTELO DO
NEIVA (P)



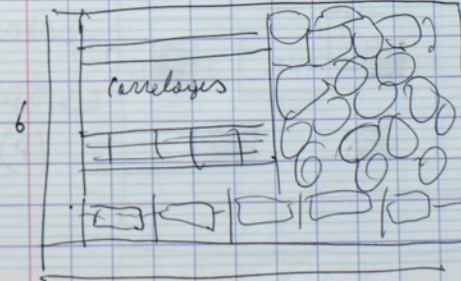
9930911

CASTELO DO
NEIVA (P)



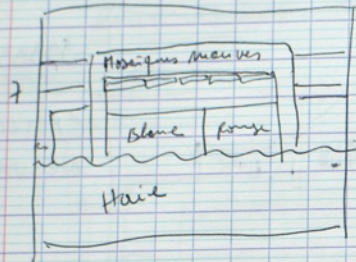
10000911

MARINHA
(P)

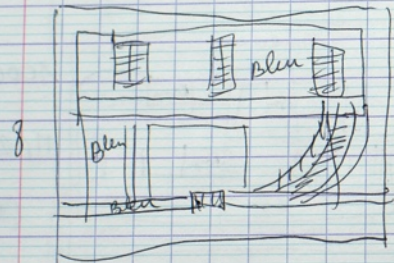


10010911

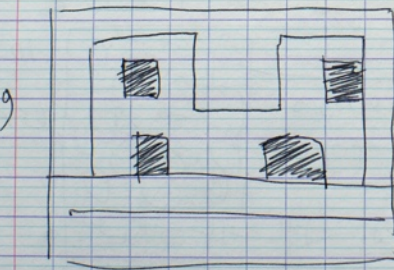
ESPOSENDE
(P)



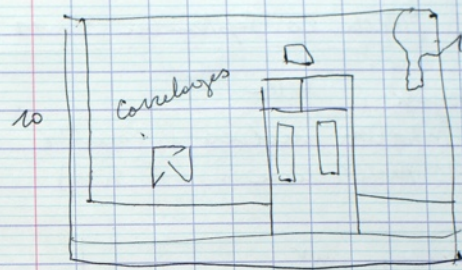
10020911
ESPOSEWDE
(P)



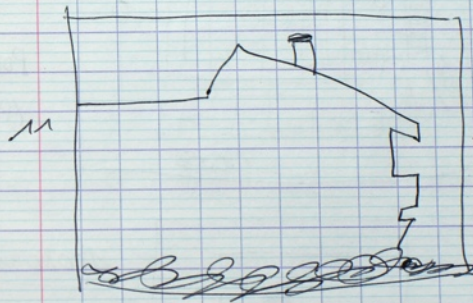
10030311
ESPOSEWDE
(P)



10040311
ESPOSEWDE
(P)



10050911
A VER-O-MAR
(P)

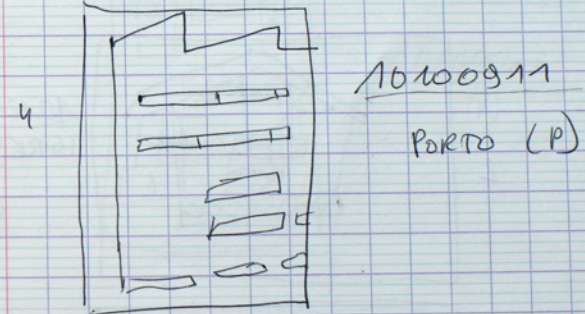
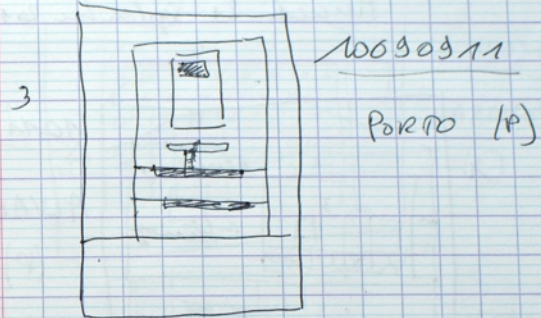
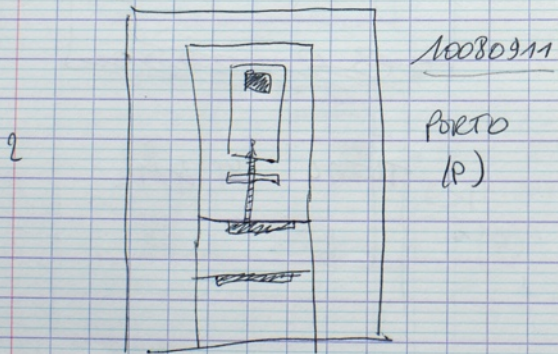
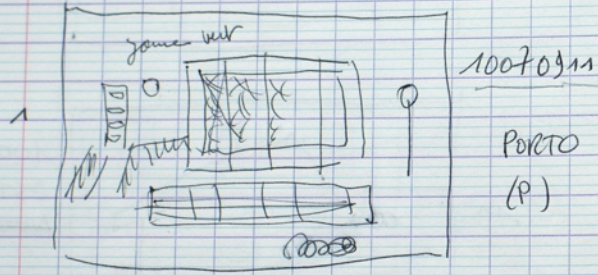


10060911
ESTELA
~~MARINIS~~
(P)

TOTAL 14T KM

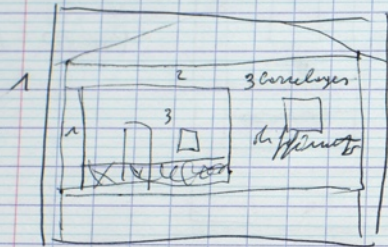
Mardi 20 Septembre 2011

Voyage à Porto
Fondation Serralves + Faculté
d'Architecture - (A. Siza).



TOTAL = 185 KM

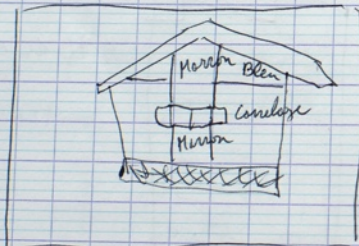
Mercredi 21 septembre 2011



10110911

ALVARAES

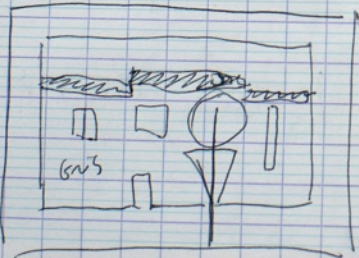
(P)



10120911

IGREJA NOVA

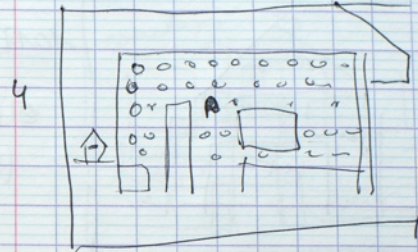
(P)



10130911

BARCELOS

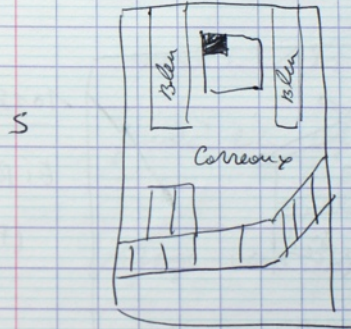
(P)



10140911

BARCELOS

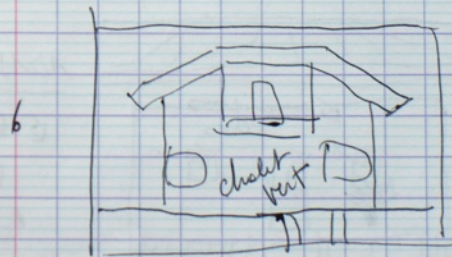
(P)



10150911

BARCELOS

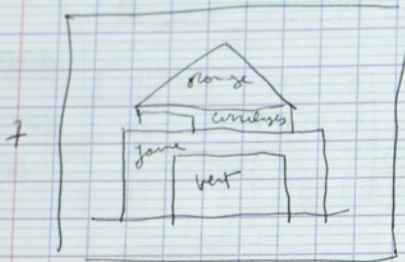
(P)



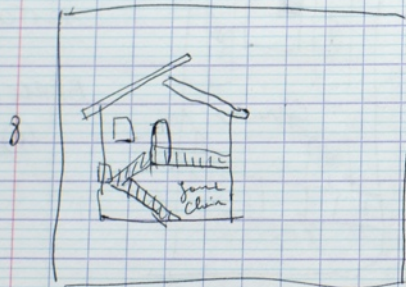
10160911

BARCELOS

(P)



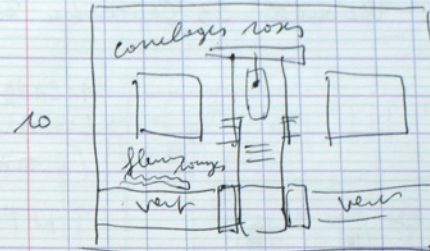
10170911
EIROGO
(P)



10180911
EIROGO
(P)



10190911
EIROGO
(P)



10200911
EIROGO (P)

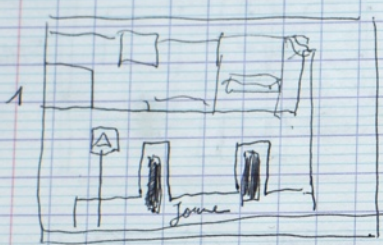
TOTAL 187 KM.

jeudi 22 septembre 2011

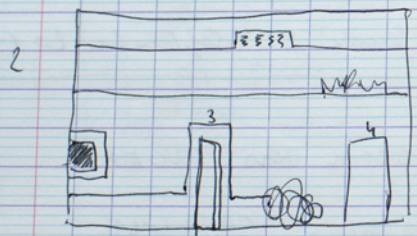
VOYAGE VERS EVORA

TOTAL = 593 KM

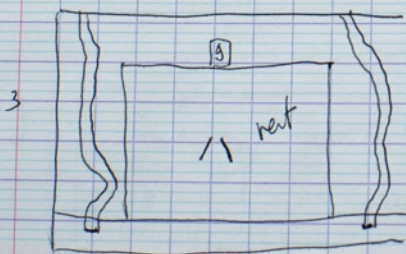
Vendredi 23 Septembre 2011



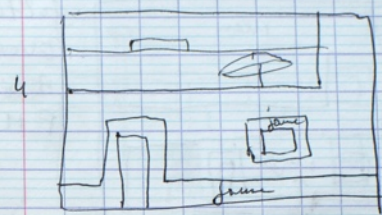
10210911
EVORA
(A. SIZA)
FIN MATINÉE



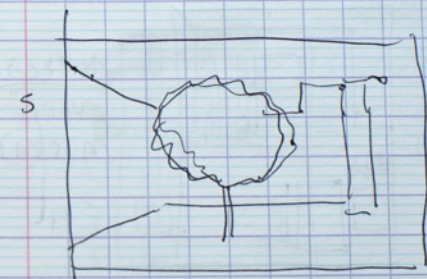
10220911
EVORA
(A. SIZA)
F.M.



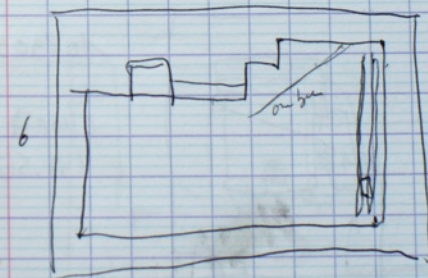
10230911
EVORA
(A. SIZA)
FM



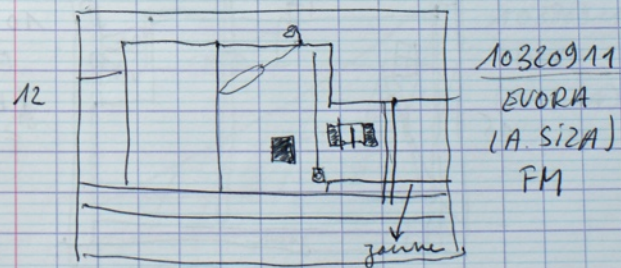
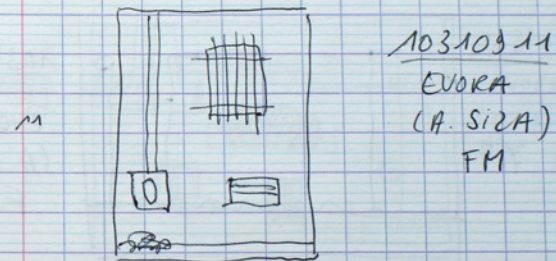
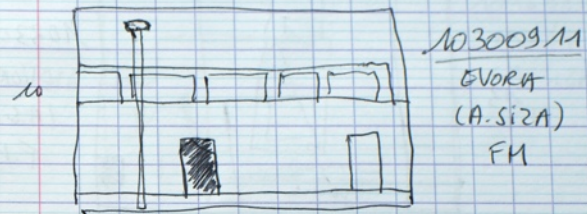
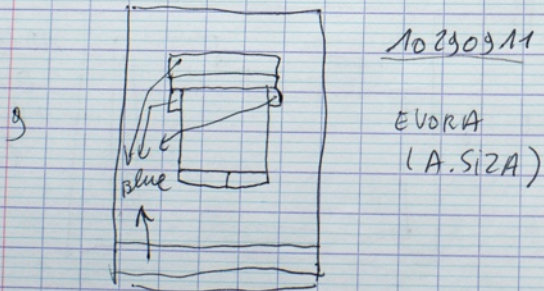
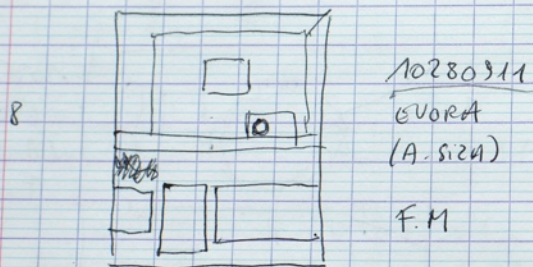
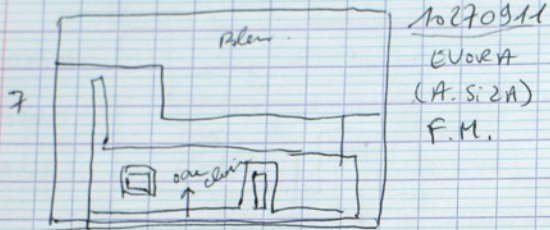
10240311
EVORA
(ALVARO SIZA)
FM.

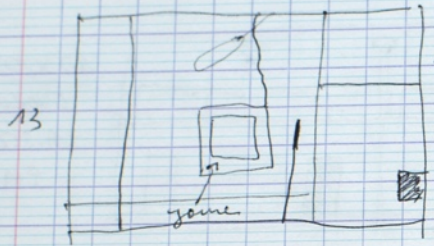


10250911
EVORA
(A. SIZA)
F.M.

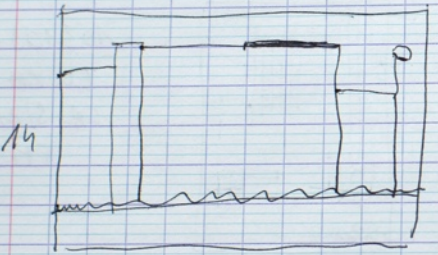


10260911
EVORA
(A. SIZA)
F.M.

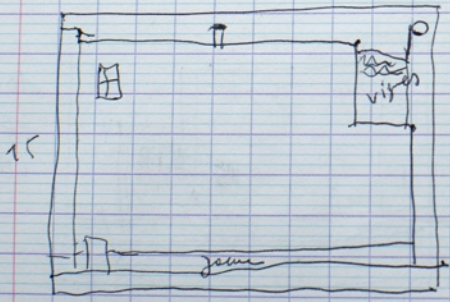




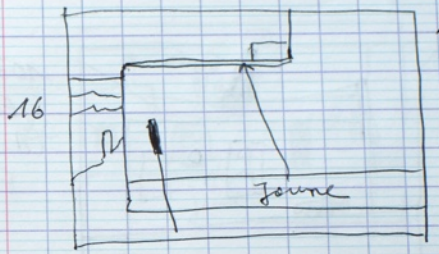
10330911
 EVORA
 (A. SIZA)
 F.M



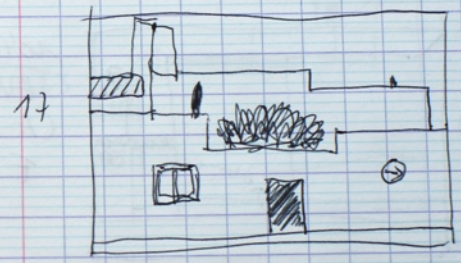
10340911
 EVORA
 (A. SIZA)
 F.M



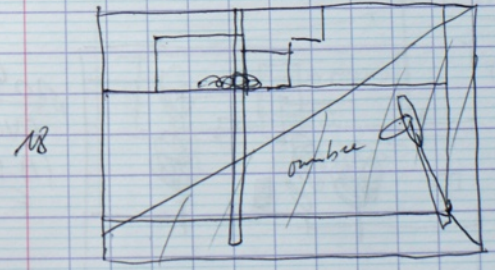
10350911
 EVORA
 (A. SIZA)
 F.M



10360911
 EVORA
 (A. SIZA)
 F.M

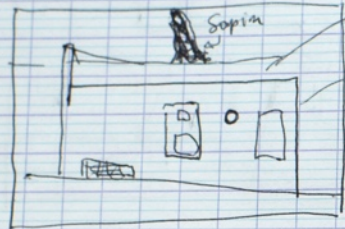


10370911
 EVORA
 (A. SIZA)
 F.M



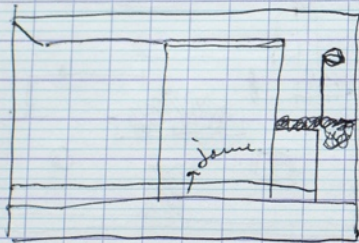
10380911
 EVORA
 (A. SIZA)
 F.M

19



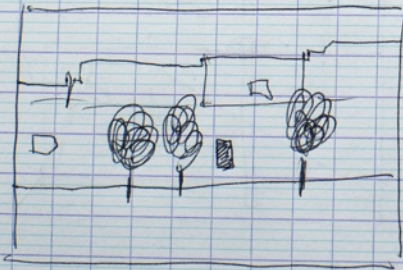
10350911
EVORA
(A. SIZA)
F.M

20



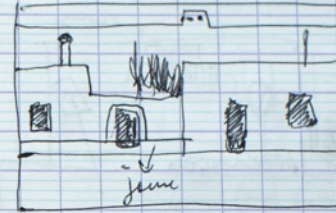
10400911
EVORA
(A. SIZA)
F.M

21



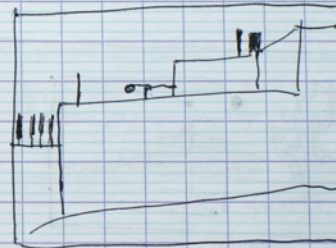
10410911
EVORA
(A. SIZA)
F.M

22



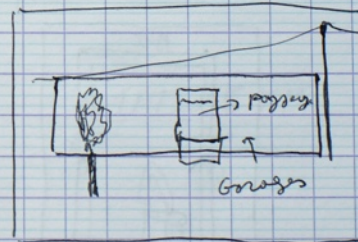
10420911
EVORA
(A. SIZA)
F.M

23



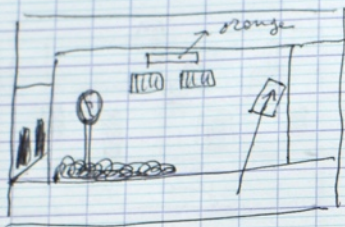
10430911
EVORA
(A. SIZA)

24



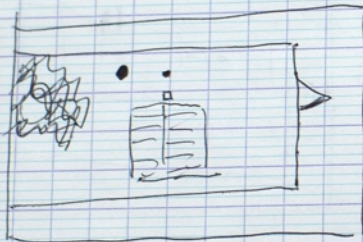
10440911
EVORA
(A. SIZA)

25



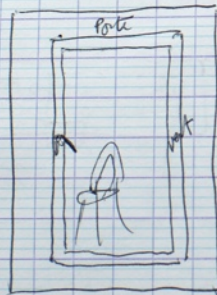
10450911
 EVORA
 (A.S.2A)
 F.M.

26



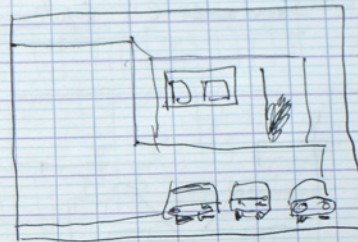
10460911
 EVORA
 (A.S.2A)
 F.M.

27



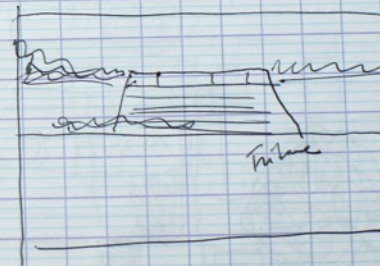
10470911
 EVORA
 (A.S.2A)
 F.M.

28



10490911
 EVORA
 (A.S.2A)
 F.M.

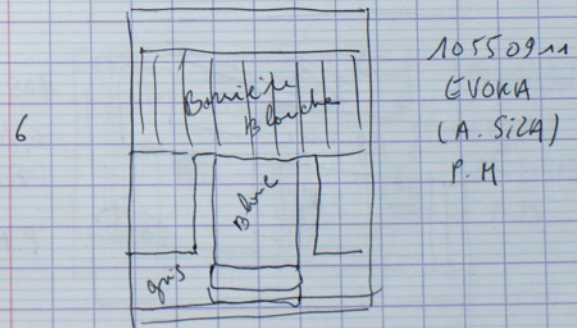
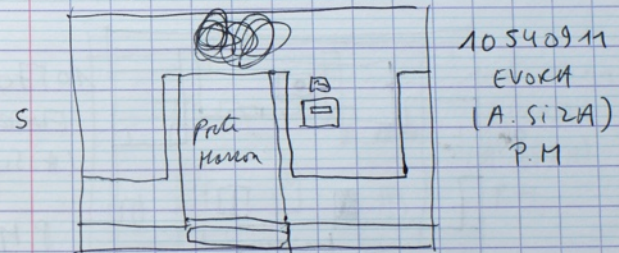
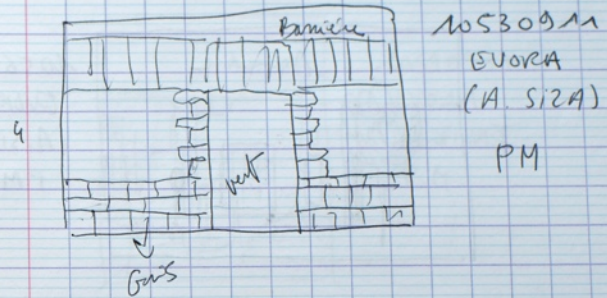
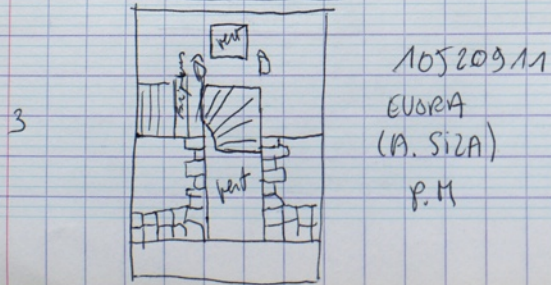
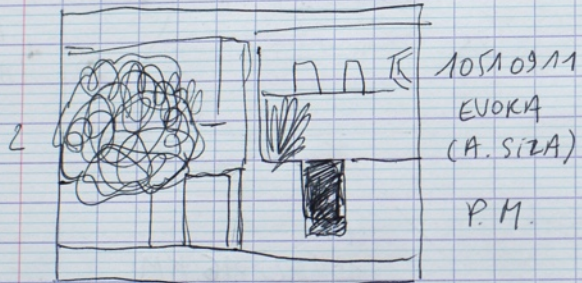
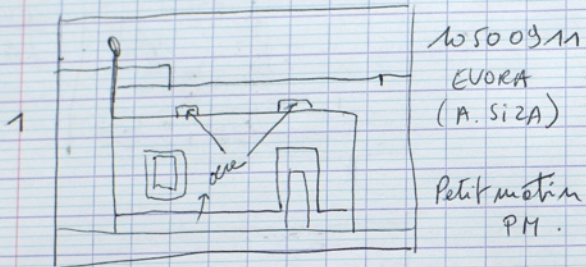
29

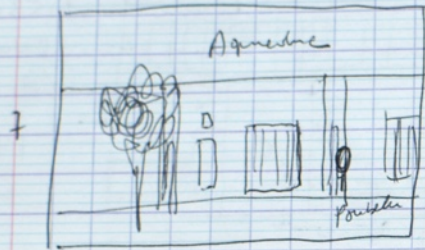


10490911
 EVORA
 (A.S.2A)
 F.M.

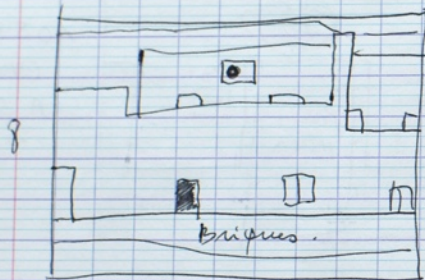
TOTAL 16 KM

Samedi 24 Septembre 2011

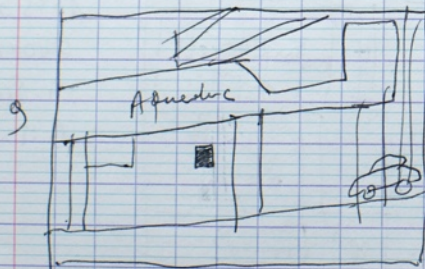




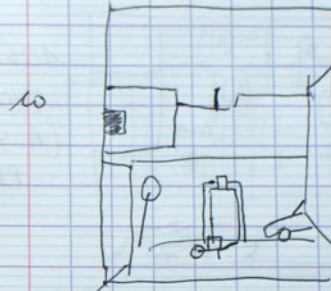
10560911
EVORA
(A. SIZA)
P.M.



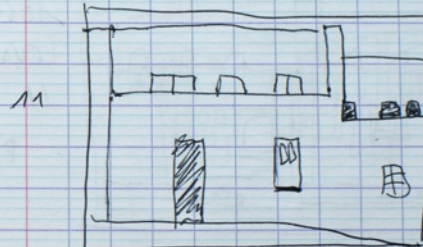
10570911
EVORA
(A. SIZA)
P.M.



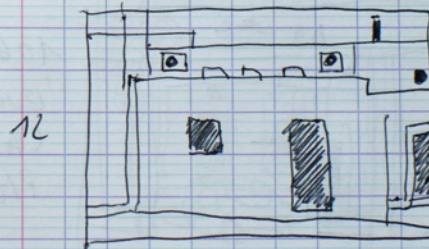
10580911
EVORA
(A. SIZA)
P.M.



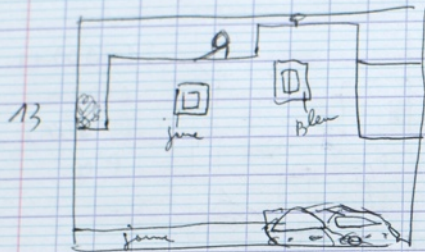
10590911
EVORA
(A. SIZA)
P.M.



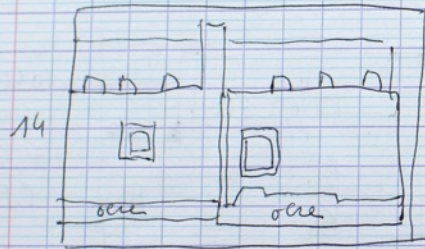
10600911
EVORA
(A. SIZA)
P.M.



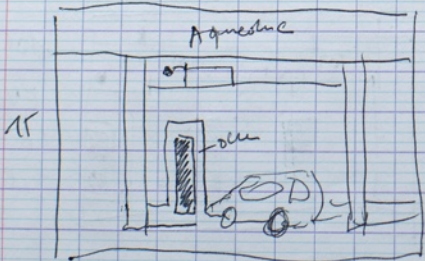
10610911
EVORA
(A. SIZA)
P.M.



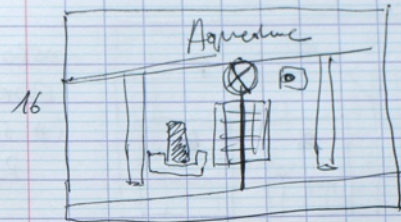
10620911
EVORA
(A. SIZA)
PM



10630911
EVORA
(A. SIZA)
PM



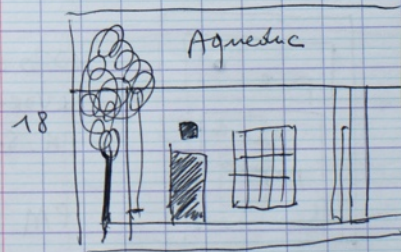
10640911
EVORA
(A. SIZA)
PM



10650911
EVORA
(A. SIZA)
PM

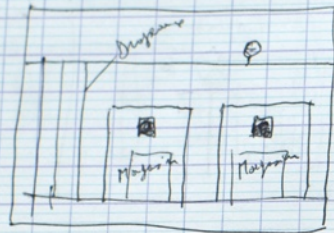


10660911
EVORA
(A. SIZA)
P.M.



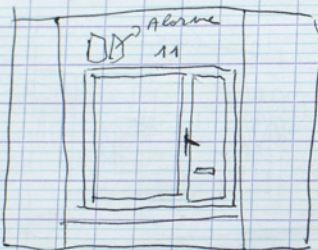
10670911
EVORA
(A. SIZA)
P.M.

19



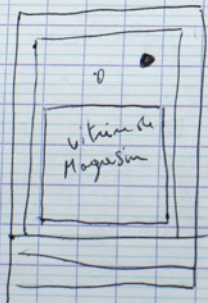
10680911
EVORA
(A. SIZA)
P.M.

20



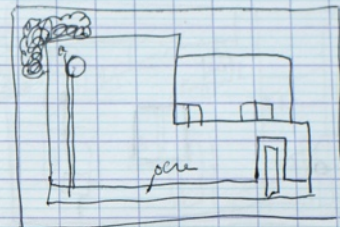
10690911
EVORA
(A. SIZA)
P.M.

21



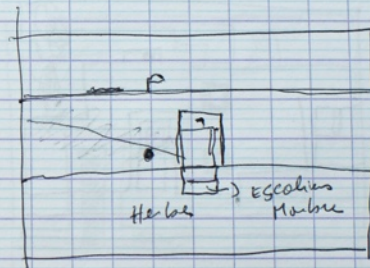
10700911
EVORA
(A. SIZA)
P.M.

22



10710911
EVORA
(A. SIZA)
P.M.

23



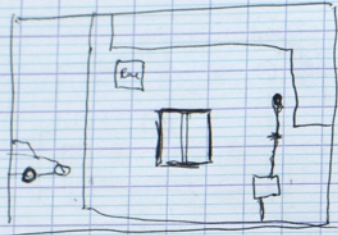
10720911
EVORA
(A. SIZA)
P.M.

24



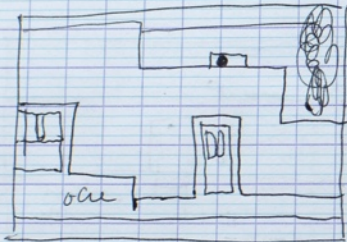
10730911
EVORA
(A. SIZA)
P.M.

25



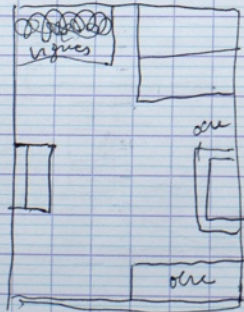
10740911
EVORA
(A. SIZA)
P.M

26



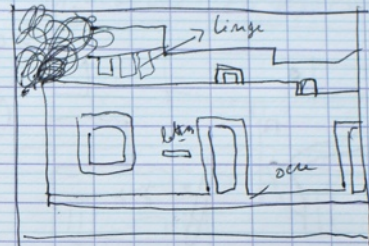
10750911
EVORA
(A. SIZA)
P.M

27



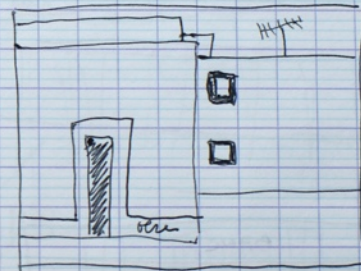
10760911
EVORA
(A. SIZA)
P.M

28



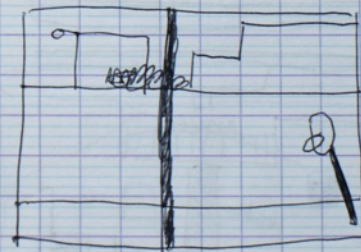
10770911
EVORA
(A. SIZA)
P.M

29



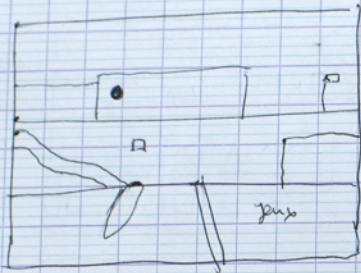
10780911
EVORA
(A. SIZA)
P.M

30



10790911
EVORA
(A. SIZA)
P.M

31



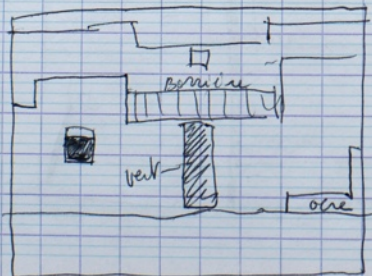
10800911
 EVORA
 (A. SIZA)
 P.M.

32



10810911
 EVORA
 (A. SIZA)
 P.M.

33

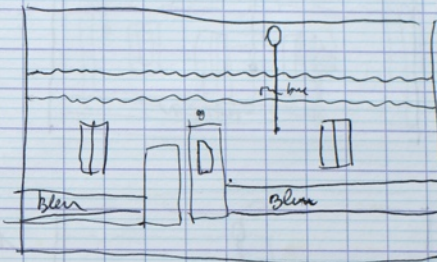


10820911
 EVORA
 (A. SIZA)
 P.M.

TOTAL = 18 KM

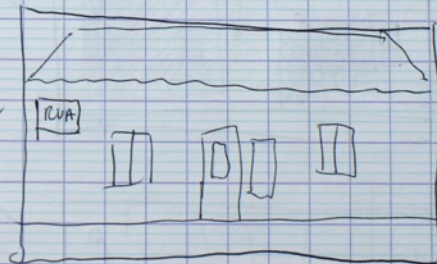
Dimanche 25 septembre 2011

1



10830911
 LUZ
 (P)

2

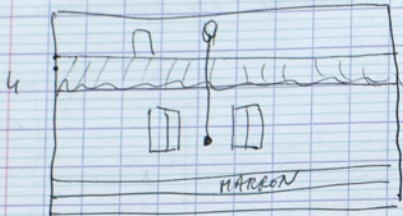


10840911
 LUZ (P)

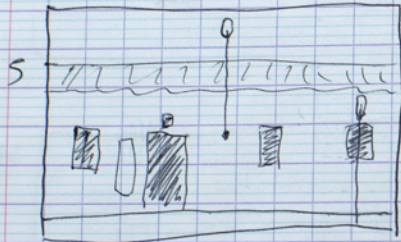
3



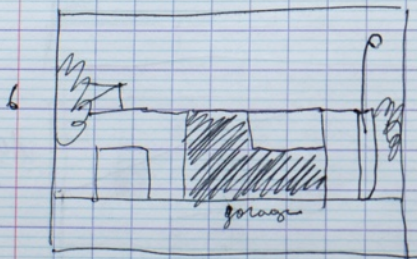
10850911
 LUZ (P)



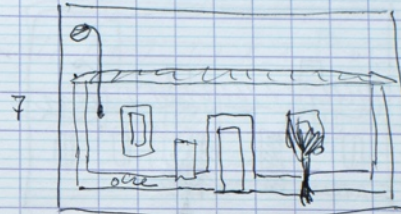
10860911
LUZ
(P)



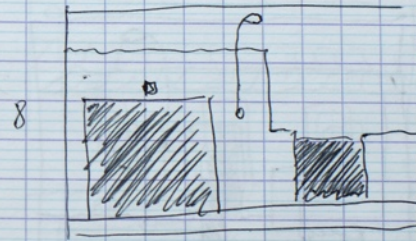
10870911
LUZ
(P)



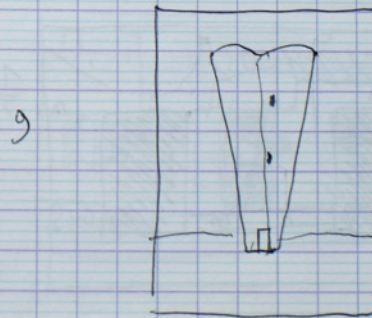
10880911
LUZ (P)



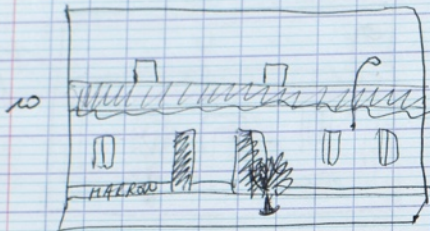
10890911
LUZ (P)



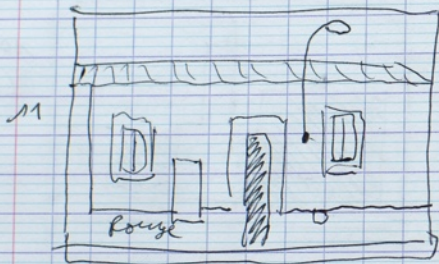
10900911
LUZ (P)



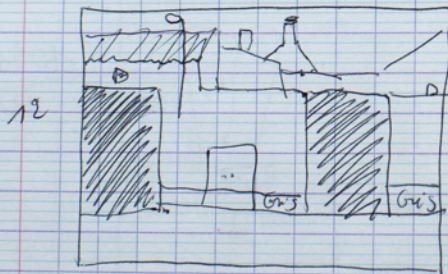
10910911
LUZ (P)



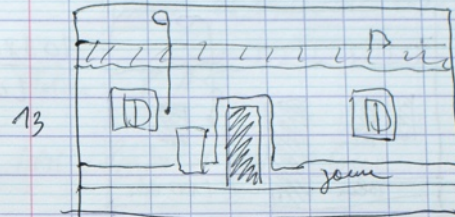
10920911
LU2 (P)



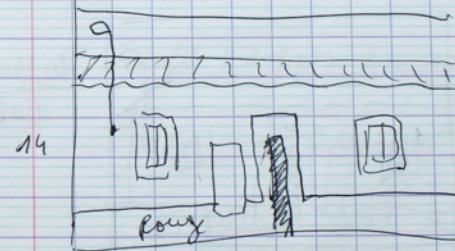
10930911
LU2 (P)



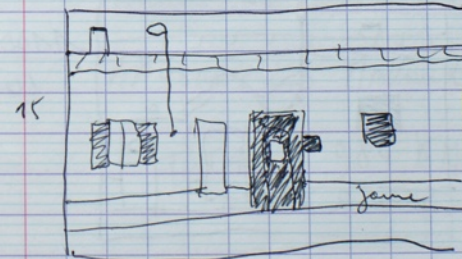
10940911
LU2 (P)



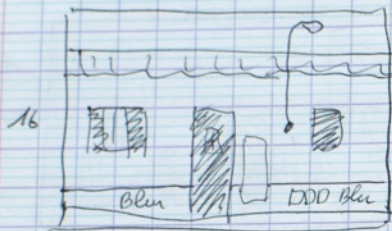
10950911
LU2 (P)



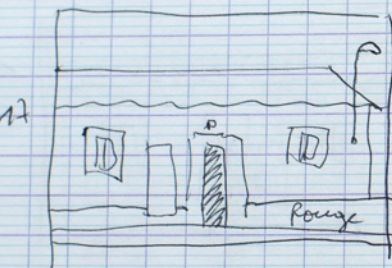
10960911
LU2 (P)



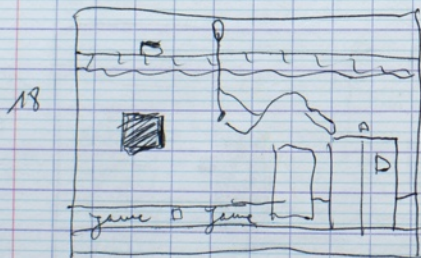
10970911
LU2 (P)



10980911
LOZ (P)



10990911
LOZ (P)



11000911
LOZ (P)

TOTAL : 140 KM

Lundi 26 septembre 2011

Motiv : RAS

APM : Préproctures utru

TOTAL = 9 KM

Mardi 27 septembre 2011

EVORA → BAYONNE

TOTAL : 937 KM.

Mercredi 28 septembre 2011

BAYONNE → M. Venil 57 Mer

TOTAL = 984 KM